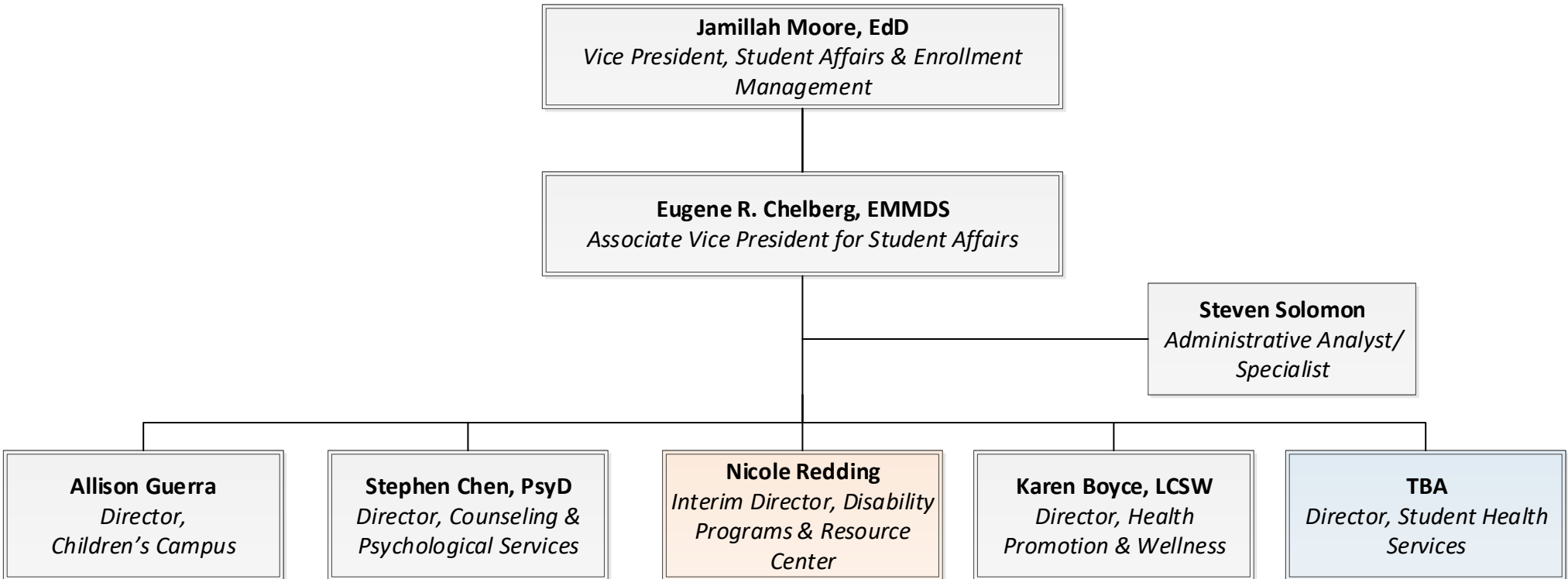


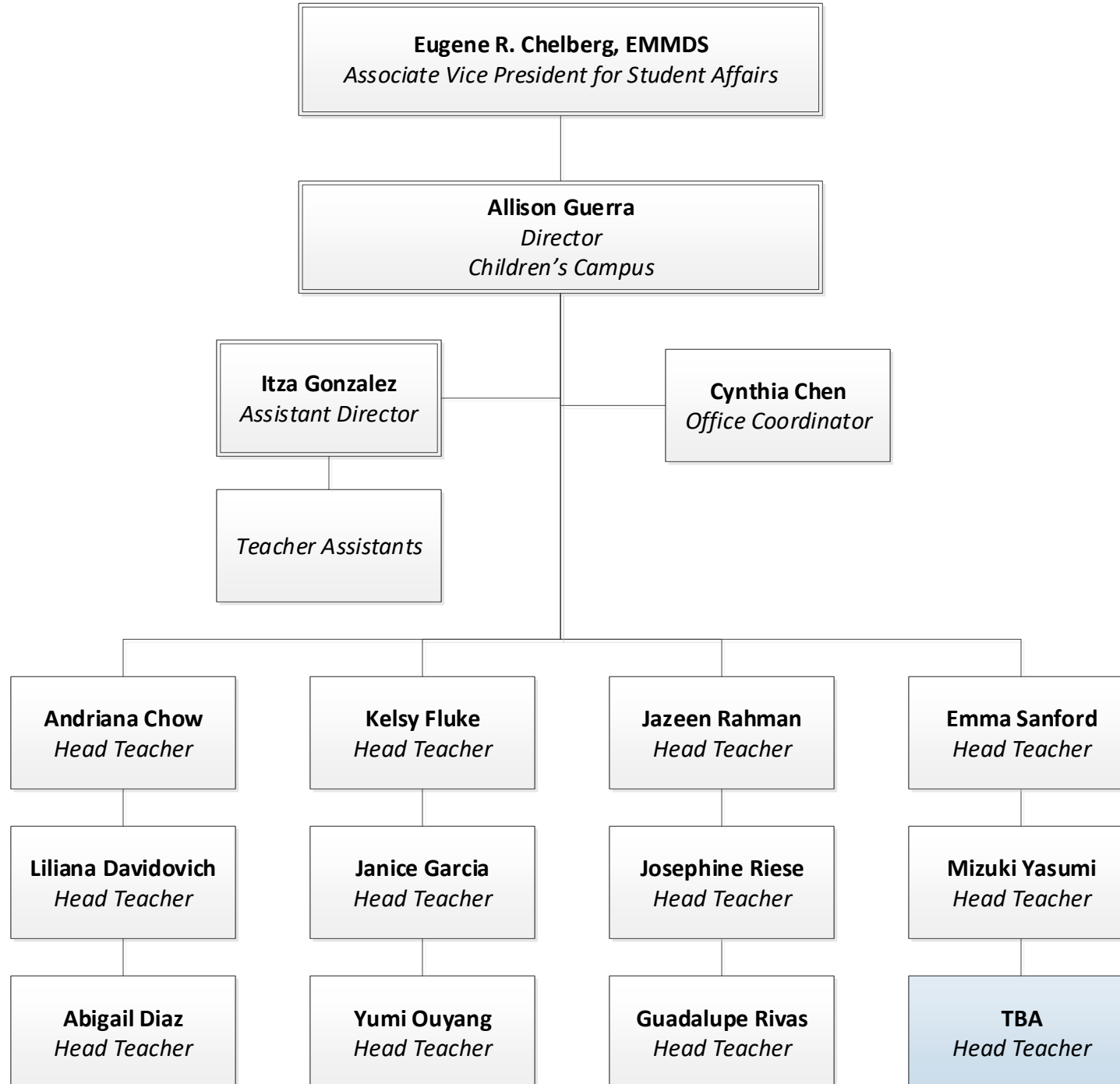


KEY:
Blue – Unfilled Position
Yellow – Newly Established Position
Orange – Interim Appointee



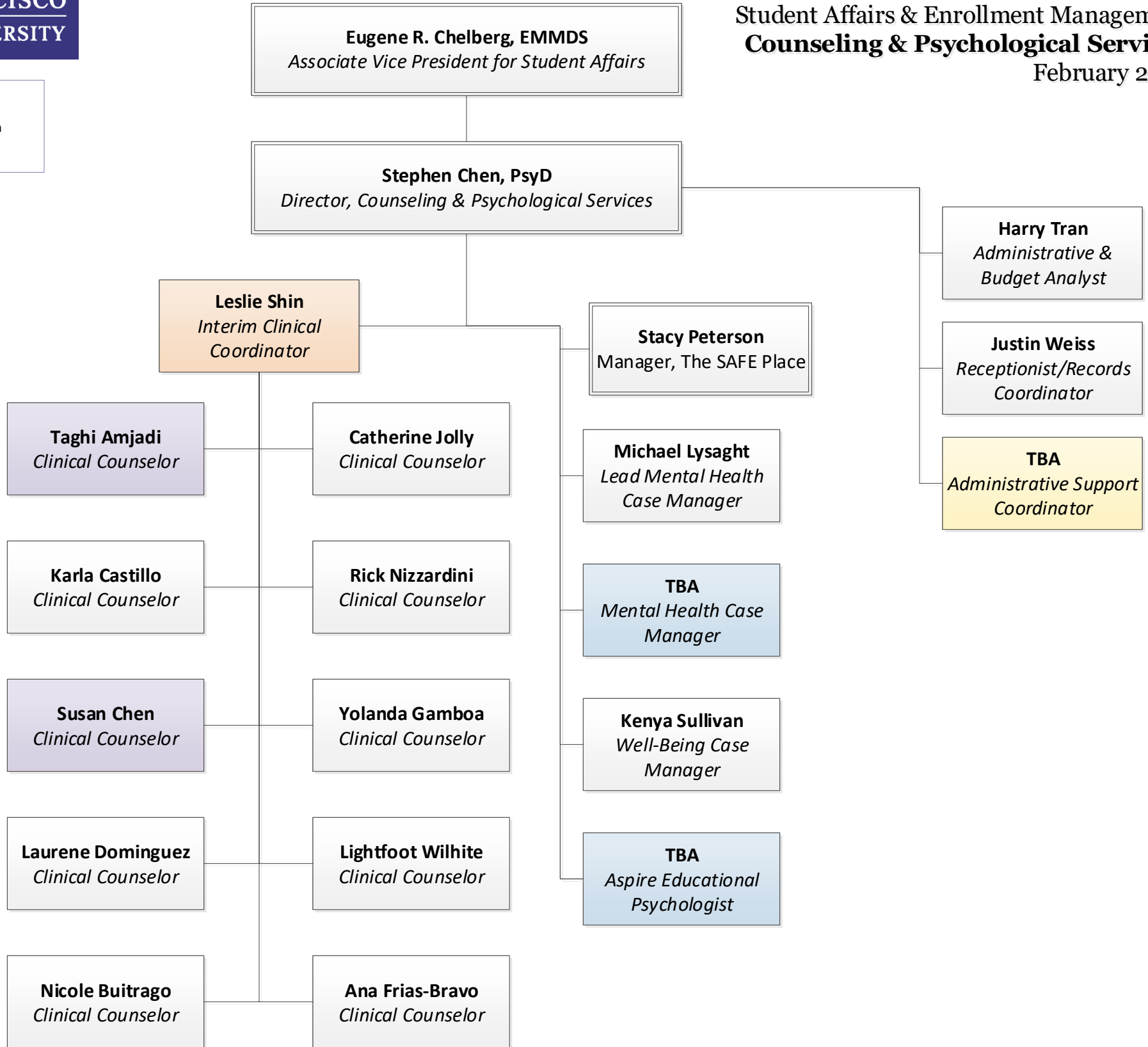


KEY:
Blue – Unfilled Position
Yellow – Newly Established Position
Orange – Interim Appointee





KEY:
Blue – Unfilled Position
Yellow – Newly Established Position
Orange – Interim Appointee
Purple – On Sabbatical





ORGANIZATION CHART
 Student Affairs & Enrollment Management
Disability Programs & Resource Center
 February 2022

KEY:
 Blue – Unfilled Position
 Yellow – Newly Established Position
 Orange – Interim Appointee

Eugene R. Chelberg, EMMDS
Associate Vice President for Student Affairs

Nicole Redding
*Interim Director,
 Disability Programs & Resource Center*

Avi Chandiramani
Interim Associate Director

Lorraine Diaz
*Administrative & Budget
 Analyst*

Greg James
Employee Accommodations

Maisoon Alghethy
*Senior Disability
 Specialist*

Kenneth Adams
Disability Specialist

Alan Fisk
Disability Specialist

Daniel Lebrija
Disability Specialist

Tong Lor
Disability Specialist

TBA
*Student Success
 Coordinator*

Dalice Stogden
*Physical Access
 Services Coordinator*

Terrence Daniels
*Exam
 Accommodations
 Coordinator*

Ed Daranciang
*Web Accessibility
 Coordinator*

Daniel Fontaine
*Accessible Media
 Coordinator*

Mantasha Lakdawala
*Accessible
 Procurement Analyst*

Roberto Santiago
*Deaf and Hard of
 Hearing (DHOH)
 Services Coordinator*

Hillary Smith
*Back-up DHOH
 Services Coordinator*

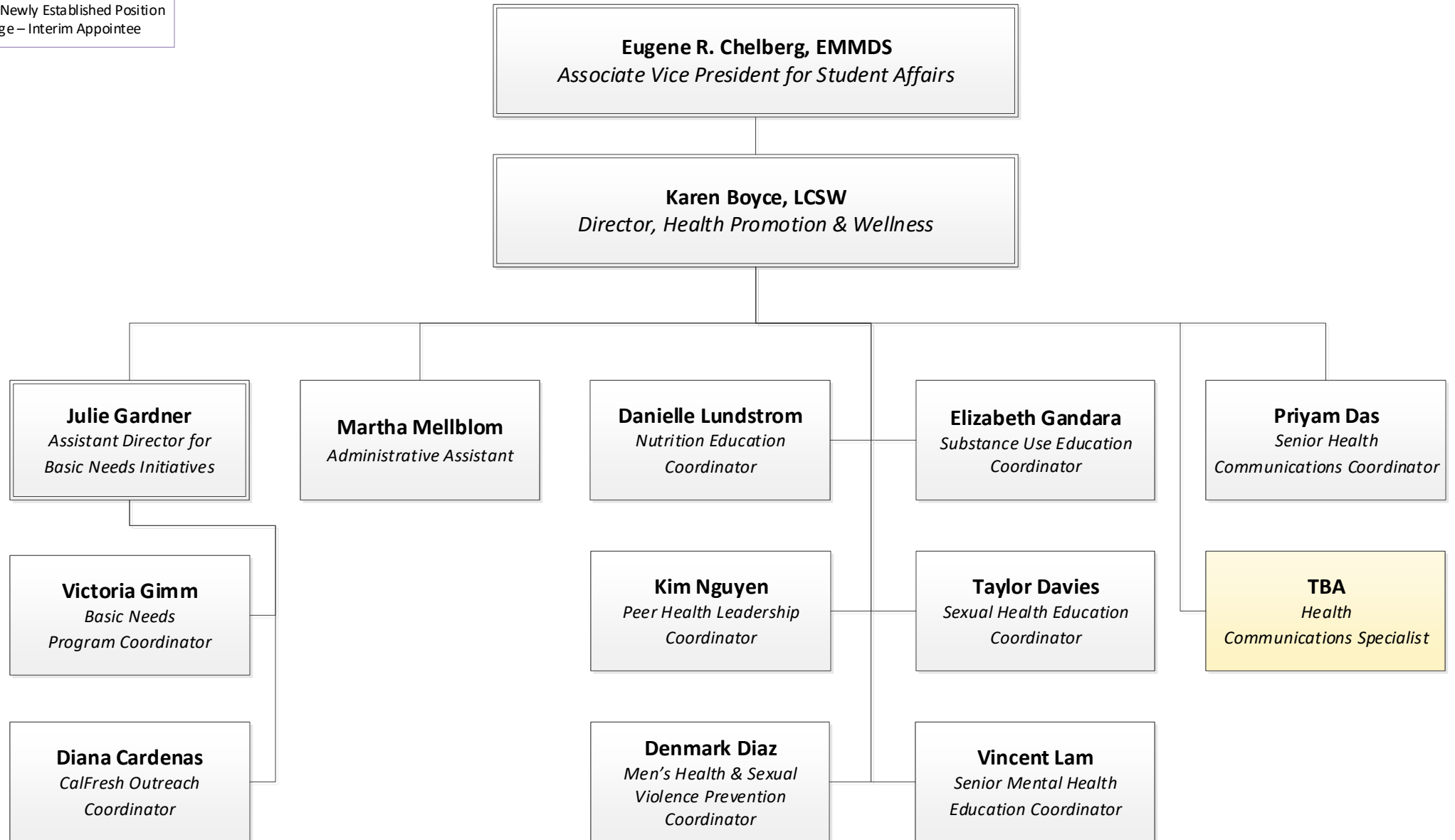
**Interpreters I & II
 Translators I & II**
Hourly

Realtime Captioners
Hourly

Bryan Higera
*Program Services
 Coordinator*



KEY:
Blue – Unfilled Position
Yellow – Newly Established Position
Orange – Interim Appointee



KEY:
 Blue – Unfilled Position
 Yellow – Newly Established Position
 Orange – Interim Appointee

Eugene Chelberg, EMMDS
 Associate Vice President for Student Affairs

TBA
 Director, Student Health Services

Carol Brewer
 Health Administrative Lead

Lien Ho, PharmD
 Pharmacist-in-Charge

Teresa Rebeiro, MD
 Interim Medical Director

Mira Medan, RN
 Clinic Manager

Kaitlin Goins
 Administrative Operations Specialist

Kristina Bautista
 Functional Business Analyst

Benson Jen, PharmD
 Pharmacist

Ronald Holt, DO
 Psychiatry

Allan Lee, MD
 Staff Physician

Keri Schwartz, FNP
 Medical Operations Lead

Stephanie Delos Reyes-O'Brien, RN
 RN III

Stephanie Darden, RN
 Temp Pool; RN

Hanna Pham, HIT
 Medical Services Lead

Tuan-Anh Mai
 Storekeeper

Claudia Sanchez
 Health Information Systems Analyst

Offalyn Samatra
 Pharmacy Technician

Purvi Sangani, MD
 Psychiatry

Kirsten Stewart, MD
 Staff Physician

Linda Meier, NP
 Nurse Practitioner

Erin Kenney, RN
 RN III

Brady Skinner, MA
 Medical Assistant

Yenisei Adelantar, MA
 Medical Assistant

Patricia Portillo
 Business Office Analyst

William Luu
 Medical Records

Mary Chang
 Temp Pool Pharmacist

TBA
 Psychiatry

Nikhil Bhardwaj, MD
 Temporary Staff Physician

Caren Cubas-Forsyth, WHNP
 Nurse Practitioner

Bonnie Ogg, RN
 RN III

Tess Gabon, MA
 Medical Assistant

Beverly Paguergan-Arenas, MA
 Medical Assistant

Taylor Williams
 Health Information Consultant

Claire Guerrero
 Referral Coordinator

Dawn Yu
 Temp Pool Pharmacist

TBA
 Mental Health Case Manager (CAPS)

Roger Argand, MD
 Temporary Staff Physician

Jane Hwang, NP
 Nurse Practitioner

Monica Garcia, RN
 Temp Pool; RN

Stella Siu, MA
 Medical Assistant

Marivic Decastro, CA
 Clinical Assistant

Marie Monterola
 Health Services Associate

Jennifer Lopez
 Health Services Associate

TBA
 Temp Pool Pharmacist

TBA
 Staff Physician

Taleen Moughamian, NP
 Temp-Pool; NP

Mindy Xu, RN
 Temp Pool; RN

Ana Leveron, MA
 Medical Assistant

Yuanmei Zhang, CA
 Clinical Assistant

Lily Lew
 Health Services Associate

Jeffery McCurtain
 Athletic Trainer

Victoria Vayo
 Temp-Pool; NP

TBA
 RN III

Malia Oakley, MA
 Medical Assistant

TBA
 Temp Pool; MA

TBA
 Radiologic Technologist

TBA
 Nurse Practitioner

TBA
 Temp Pool; RN

TBA
 Medical Assistant

TBA
 Temp Pool; MA

TBA
 Temp-Pool; NP

TBA
 Temp Pool; RN

TBA
 Medical Assistant